

Leather Infusion Wash and Rinse have made it possible to conveniently refresh, clean and condition many smooth and suede leather garments – all in your home laundry. Garments that were once “unwearable” because of staining, the elements, and odors can now be “brought back” into useful life.

We have extensively tested Leather Infusion on all types of leather garments, in all colors and design treatments. However, as worldwide tanning and dyeing processes vary, so does the quality of the leather they produce. For this reason, there are some leather garments which should not be washed in a washing machine.

**Obviously, extreme care should be taken when washing some of the following examples:**

- Delicate “thinly sliced” or high-fashion leathers
- Brightly colored leathers or garments containing several colors
- Leather garments constructed with lightweight threads and delicate lining
- Fragile closures and decorative ornamentation

**For Best Results:**

- Shake products well before using
- Always TEST FIRST in a hidden area for colorfastness using a dampened white cloth. If significant color is removed from the leather, then DO NOT WASH that item.
- NEVER use HOT water -- ALWAYS use COLD water wash
- ALWAYS SEPARATE colors
- USE A MESH GARMENT BAG to protect the garment
- Add products to water BEFORE adding item – or add to detergent dispenser
- AIR DRY on a FLAT SURFACE away from direct sunlight or heat source. Use towels to minimize creasing. When item is nearly dry use a padded hanger if applicable. Be careful -- Leather can shrink and become stiff when dried near heat.

**Note:** If applicable, closely follow manufacturer’s Care Label instructions for cleaning in washing machine. We suggest “Gentle” or “Delicate” cycles, Cold temperature, Small Load settings.

**Note:** Because leather is porous and stains easily, it is possible that some stains or discolorations will not be removed.

**Care Tip:** For serious mold and mildew problems, and to deeply condition leather, we recommend 2 oz. Leather Therapy Restorer/Conditioner be added to the washing solution ([www.leathertherapy.com](http://www.leathertherapy.com)).



**Need Help or have a question  
before you start?**

**Call us Toll Free**

**1.800.711.8225**

**[info@leatherinfusion.com](mailto:info@leatherinfusion.com)**



[www.leatherinfusion.com](http://www.leatherinfusion.com)



Made in USA by Unicorn Editions, Ltd.  
PO Box 432, Oldwick, NJ 08858

Keep out of reach of children. Use gloves for sensitive skin.  
In case of eye contact flush with water. Call physician if irritation persists.



# Leather Washing

## INSTRUCTIONS



Patented Formulas

## WASHING LEATHER GLOVES



Leather gloves can be washed on your hands or in a washing machine.

For best results, wash before they become too soiled!

White gloves must not be washed with colored articles. Colored gloves may be washed with other articles of a similar color.

- Produce a good lather with 1 oz (30ml) of Leather Infusion Wash.
- Completely immerse item and wash gently. Use a soft sponge to help with soiled areas.
- Remove gloves (if hand washing) and thoroughly rinse in clean water. To add back essential emollients within the leather, add 1 ounce (30ml) of Leather Infusion Rinse to the final rinse water.
- Squeeze out excess water from the fingers downwards, and pull gently into shape. Hang up to dry out of direct sunlight -- away from any heat source.
- When gloves are nearly dry put gloves on to restore shape and softness, then remove and hang to dry.
- When dry, place on your hand and buff the surface with a soft cloth. Use a suede brush to restore the nap of suede gloves.



## TO MACHINE WASH LEATHER & FLEECE GARMENTS



To protect leather from washing machine damage during laundering, use a mesh garment bag (large enough so the garment is able to loosely fit within the bag).

**DO NOT WASH MORE THAN ONE ARTICLE PER WASH**

1) **Pre-Testing is required to insure best results:**

- a) **COLORFAST TEST:** Dampen a white cloth towel and gently rub on a hidden area of leather and lining to see if any dyes "bleed". This is especially important on multi-colored motorcycle leather suits where colors could possibly "move" to adjoining areas.
- b) **GARMENT STRENGTH TEST:** Lightly tug on seams, buttons and fabrics used as lining to insure that the article is strong enough to be machine washed.



**Note:** Because linings are made of many types of fabrics, it's important to determine whether lining is washable or subject to shrinking. For example, if Wool is washed, special care must be taken to prevent shrinkage by choosing Wool washing machine settings. Please read manufacturer's care instructions on garment label.



2) Empty pockets, secure zippers and buttons to avoid leather/fabric damage. If not using mesh bag, turn garment inside-out before washing.

3) Place garment loosely in washing machine. Add 2 – 6 oz. ( 59 ml – 177 ml) depending on the type and water volume of the washing machine liquid dispensers. **Do not add products directly onto leather garments.**



### 4) General Washing Machine Settings

Set your washing machine to: *Gentle or Delicate Wash – Cold Temperature – Medium Spin Cycle – Small Wash Load.* Use these settings for either lightly soiled or heavily soiled leathers.

5) Remove article immediately after washing and shake to reshape garment. Place on a flat surface, pad garment with toweling to prevent creasing. Several times throughout the drying process it's advisable to lightly shake, re-position and pat the leather to keep it from stiffening.



**Note:** If garment still contains excessive water, extend spin cycle or place in dryer on Air Fluff for 3-6 minutes. Check progress periodically. And remember, **NO HEAT!**

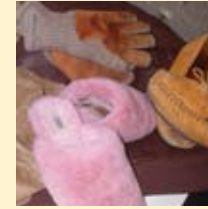
6) **For Smooth leather garments ONLY:** To help maintain leather flexibility while garment is drying, you may wish to apply Leather Infusion Rinse directly onto leather using a clean sponge. This "Dressing" step helps leather to remain flexible while drying.

7) When the garment is nearly dry it may be hung on a well-padded hanger and gently stretched to restore shape and softness. Rolled up terry towels over the hanger and in sleeves will help drying while preventing creasing.



**Care Tip on Suede:** Use a suede brush to restore the nap on totally dry garments.

## WASHING FLEECE SLIPPERS & SMALL LEATHER ITEMS



Salt, Soils, Sweat and odor-causing bacteria and molds can adhere to inner fibers – and shorten the life, and look, of the leather. Now you can refresh these items with Leather Infusion Wash and Rinse.

**Note:** Some very high-fashion and delicate shoes should not be dunked in water.

Glues that secure soles, ornamentation, and leather parts may weaken and linings may not be able to withstand soaking. For these shoes we recommend Leather Therapy products for topical leather care. [www.leathertherapy.com](http://www.leathertherapy.com)

### What you'll need:

- Small cloth towel
- Soft bristle brush
- 1 Sponge or lint-free cloth
- 1 Washing bowl / sink
- 1 Clean water bowl for Rinsing

1) Always Test for colorfastness using a dampened white cloth towel in hidden area. If color comes off easily, you should be aware that the entire article will "bleed" dye onto other areas of the item.

2) Bowl #1: Mix approximately 1 quart of cool water with 2-4 oz. (59-118 ml) of Leather Infusion Wash

3) If possible, remove any loose or decorative accessories for separate washing and drying.

4) Dip cloth or brush into washing solution and clean away soils and molds. For offensive odor control you may want to quickly dunk and swish item in Infusion Wash solution. Try not to saturate leather.

5) Dry quickly using paper toweling or absorbent cloth.

6) Liberally apply Leather Infusion Rinse to the smooth leather article using a sponge to help maintain the leather's flexibility while it dries.

If the washed item is suede, please use a stiff suede brush to gently restore the nap.

